

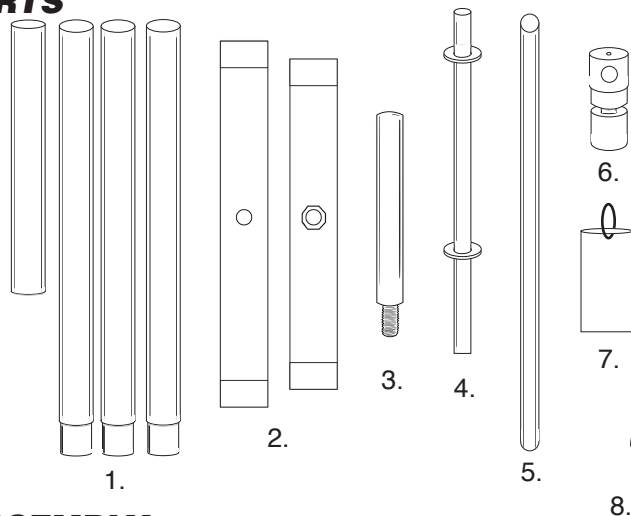
# ADVER-FLAG



MADE IN CANADA

## 14' BANNER SERIES **GROUND STAND** ASSEMBLY INSTRUCTIONS

### PARTS

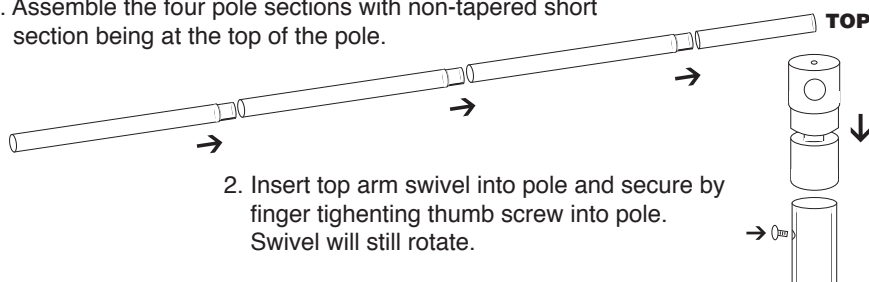


- 1. Aluminum Poles (4)**
- 2. Ground Stand Legs**
- 3. Ground Stand Stem**
- 4. 36" Pole Adapter**
- 5. Top Arm**
- 6. Top Arm Swivel**
- 7. Flag Weight**
- 8. Water Bag Weight**



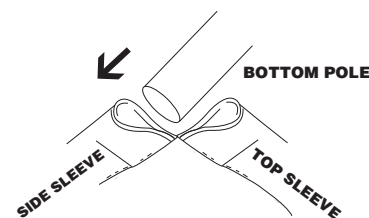
### ASSEMBLY

1. Assemble the four pole sections with non-tapered short section being at the top of the pole.

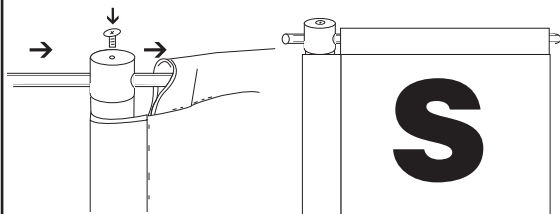


2. Insert top arm swivel into pole and secure by finger tightening thumb screw into pole. Swivel will still rotate.

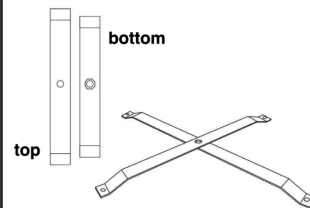
3. Pull flag over pole from bottom of pole towards top.



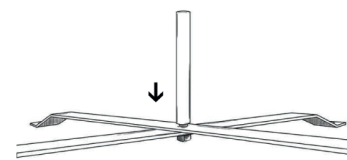
4. Insert top arm through swivel and through sleeve on top of flag. Tighten thumbscrew to secure top arm into swivel.



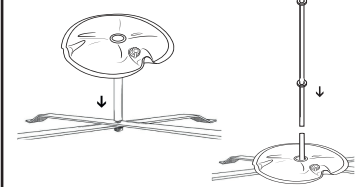
5. Place legs across one another with nut of the leg facing the ground.



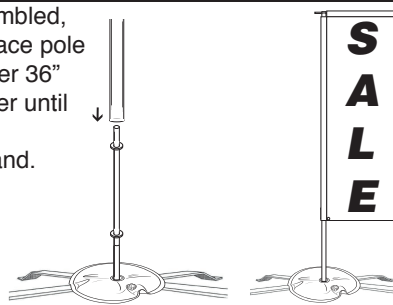
6. With nut on the bottom of the stand screw the Ground Stand Stem into place, securing both legs together in an 'X' position.



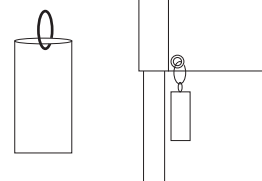
7. Next, place Water Bag Weight over Stem and Stand followed by placing the 36" Pole Adapter into stem.



8. Once assembled, carefully place pole and flag over 36" Pole Adapter until resting on Ground Stand.



9. Once flag is in place, fill plastic bag with sand or water and put into fabric bag. Next, attach bag to grommet on flag.



### ⚠ GUIDES AND PRECAUTIONS ⚠

- 14' Banner Series with Ground Stand is primarily intended for interior display. Additional weight recommended when using outdoors.

- Do not use near overhead wires, if not used correctly it may result in injury or death.

- Must have rotational movement. Keep at least 5ft away from any objects to increase life expectancy of flags. IE Fences, Trees, Buildings Etc.

Oct.31/2013