

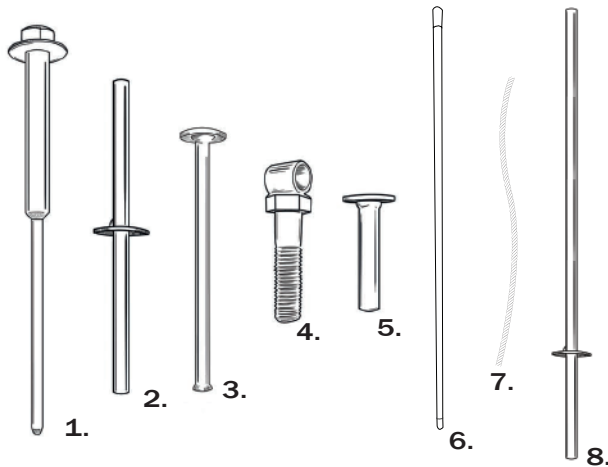
# ADVER-FLAG

## RECTANGLE SERIES GROUND SLEEVE ASSEMBLY INSTRUCTIONS

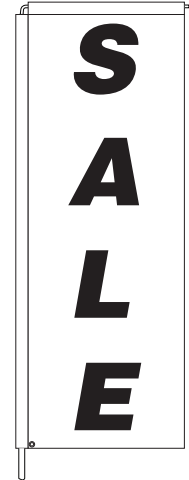


MADE IN CANADA

### PARTS

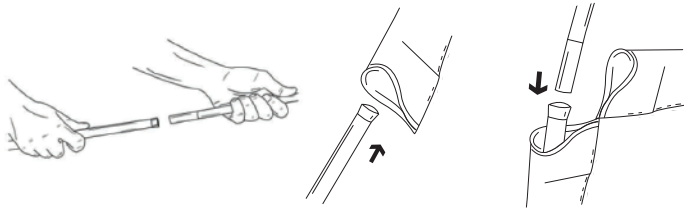


1. Ground Sleeve
2. Pole Adapter
3. Driving Rod
4. Extractor Tee
5. Ground Cap
6. Top Arm
7. Elastic Cord
8. 24" Pole Adapter Extension (optional)

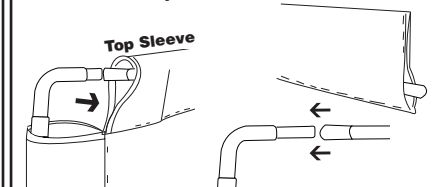


### ASSEMBLY

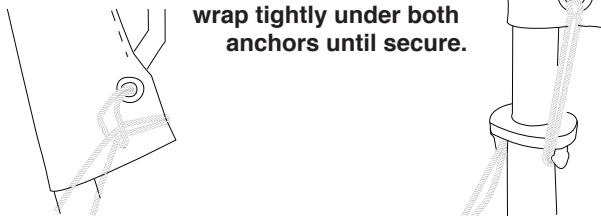
1. Stack poles together to assemble, leaving the 90° bent piece off. (DO NOT TELESCOPE POLE). Once assembled, pull flag all the way down the pole, so that you can now attach the remaining piece. Next, slide the flag back up to the top of the pole.



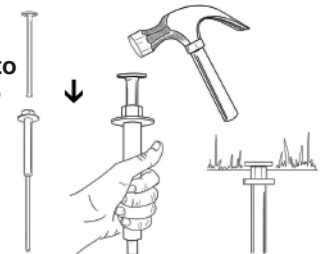
2. Connect the Top Arm of the pole by sliding it through the top pocket and out the small opening on the closed end. Ensure the Top Arm sits inside the closed pocket once connected.



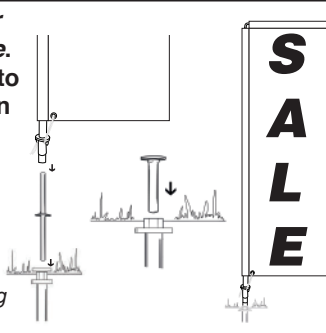
3. Take the *Elastic Cord*, fold in half and loop through grommet on flag. Pull flag and cord down until snug on pole. Once placement is decided, pull cord down toward the anchors, and wrap tightly under both anchors until secure.



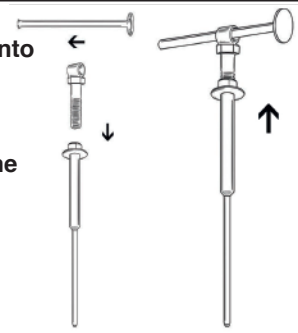
4. Next, install the ground sleeve system by placing the *Driving Rod* into the *Ground Sleeve* and drive sleeve into ground until top of nut is flush with the earth.



5. Place the *Pole Adapter* into the *Ground Sleeve*. Next, place the flag onto the *Pole Adapter*. When not in use, place the *Ground Cap* into the *Ground Sleeve*. Note: If using the 24" Pole Adapter Extension, insert into *Ground Sleeve* and then place *Pole Adapter* and flag atop of Extension.



6. To Remove: Thread *Extractor Tee* into *Ground Sleeve*, slide *Driving Rod* through *Extractor Tee* and pull *Ground Sleeve* from the ground.



### ! GUIDES AND PRECAUTIONS !

- Flag system may be damaged in winds exceeding 35 km/hr. PLEASE DO NOT USE IN INCLEMENT WEATHER.

- Do not use near overhead wires, if not used correctly it may result in injury or death.

- Must have rotational movement. Keep at least 5ft away from any objects to increase life expectancy of flags. IE Fences, Trees, Buildings Etc.