

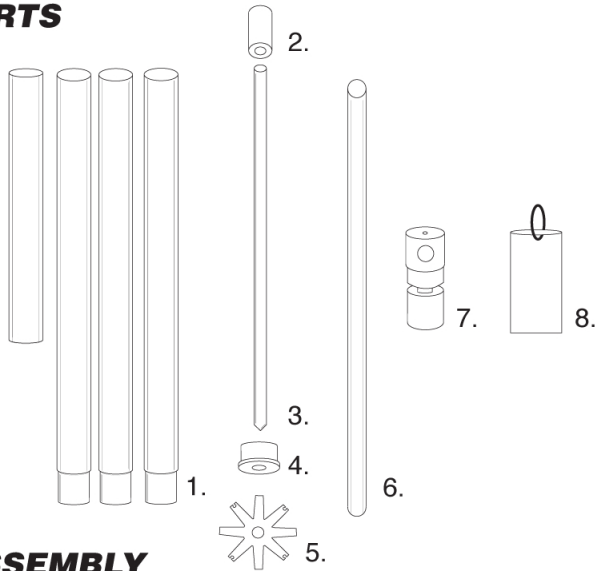
ADVER-FLAG

14' BANNER SERIES ASSEMBLY INSTRUCTIONS



MADE IN CANADA

PARTS



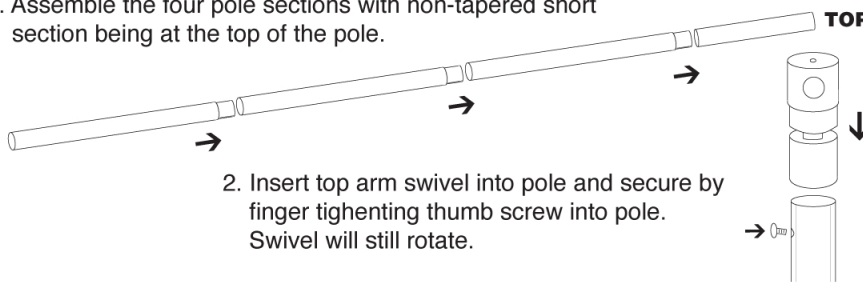
- 1. Aluminum Poles (4)**
- 2. Top Bushing**
- 3. Ground Stake**
- 4. Bottom Bushing**
- 5. Stability Plate**
- 6. Top Arm**
- 7. Top Arm Swivel**
- 8. Flag Weight**



14' Banner

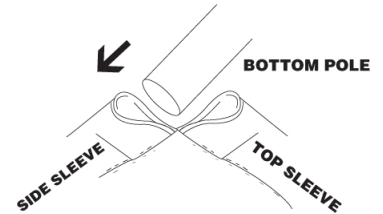
ASSEMBLY

1. Assemble the four pole sections with non-tapered short section being at the top of the pole.

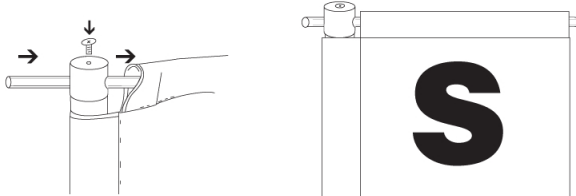


2. Insert top arm swivel into pole and secure by finger tightening thumb screw into pole. Swivel will still rotate.

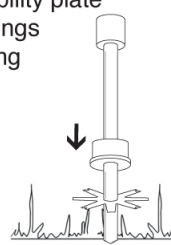
3. Pull flag over pole from bottom of pole towards top.



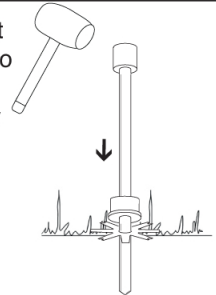
4. Insert top arm through swivel and through sleeve on top of flag. Tighten thumbscrew to secure top arm into swivel.



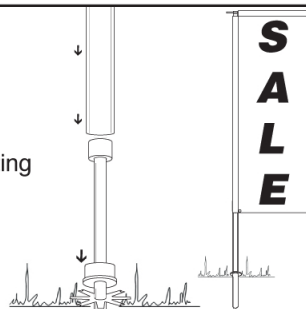
5. Place stability plate and bushings onto driving rod.



6. Using a mallet drive stake into ground approximately 18"-24".



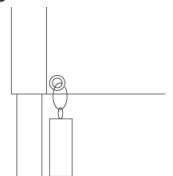
7. Once assembled, carefully place flag and pole over the driving rod until resting on bottom bushing.



8. Once flag is in place, fill plastic bag with sand and put into fabric bag.



9. Attach weight with clip to the grommet on the flag.



OCT.23/13

⚠ GUIDES AND PRECAUTIONS ⚠

- Flag system may be damaged in winds exceeding 35 km/hr. PLEASE DO NOT USE IN INCLEMENT WEATHER.

- Do not use near overhead wires, if not used correctly it may result in injury or death.

- Must have rotational movement. Keep at least 5ft away from any objects to increase life expectancy of flags. IE Fences, Trees, Buildings Etc.